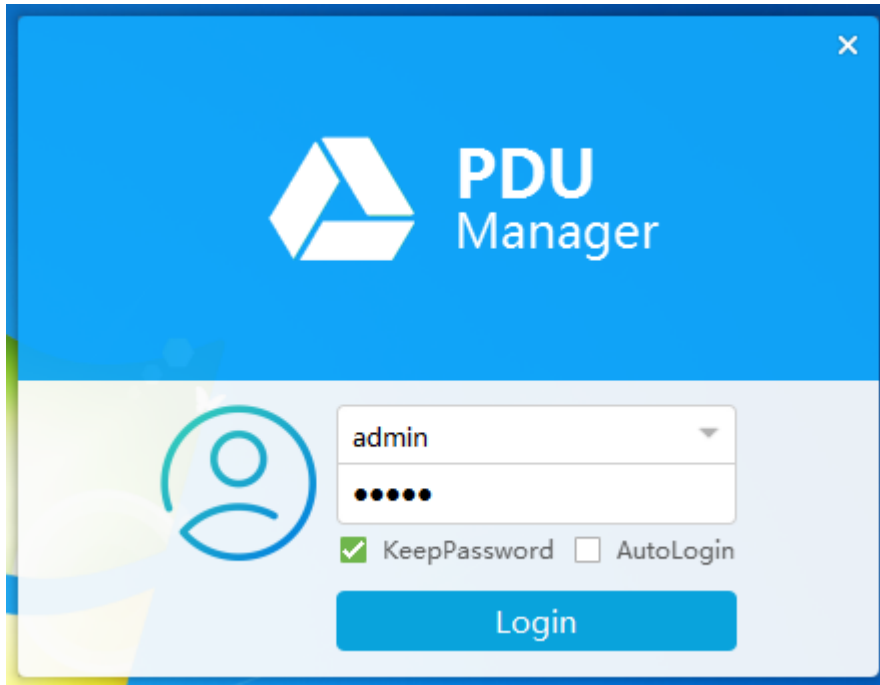


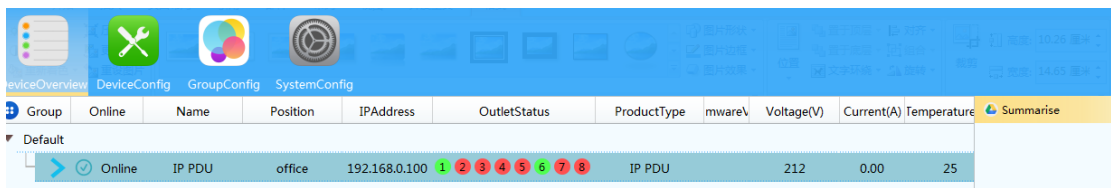
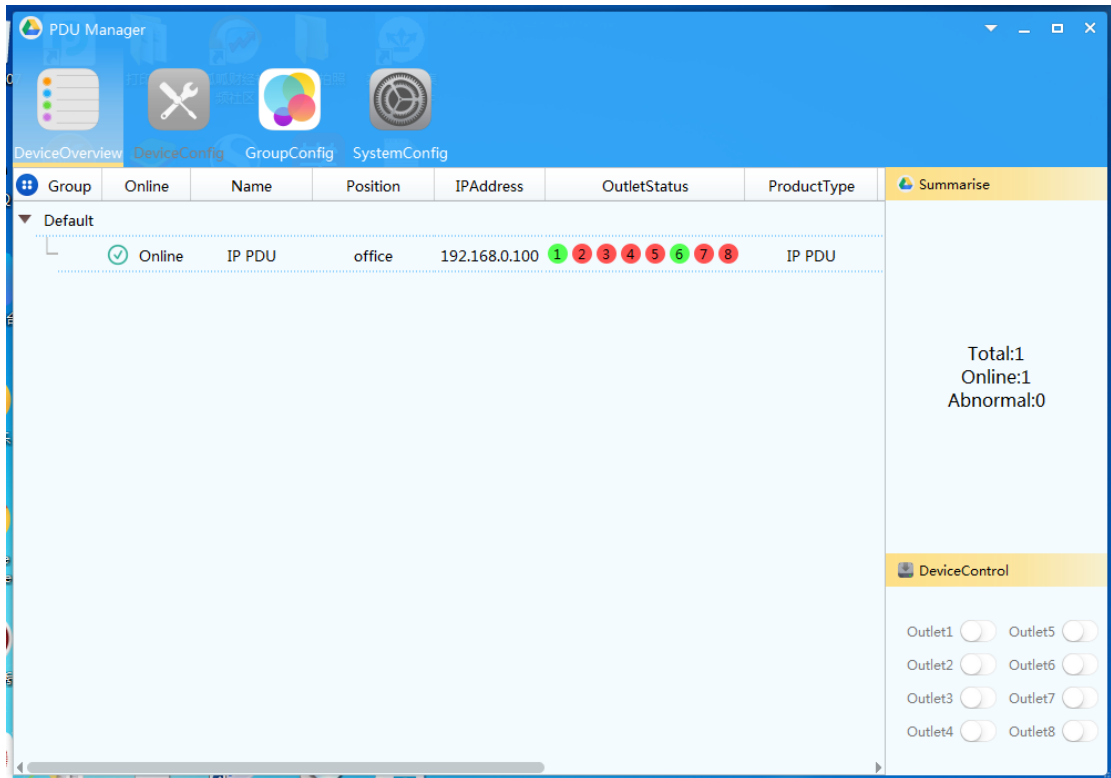
## Brief Introduction for PDU Centralized Management Software

### 1) Login Interface

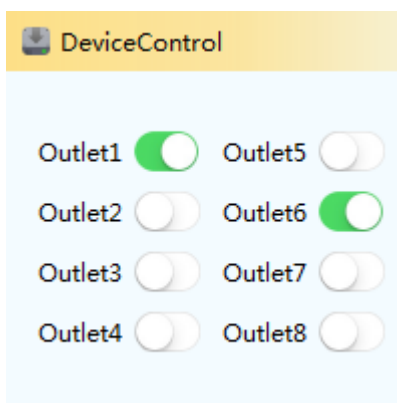


Login user authentication window, the user can login identity selection according to their own authority.

### 2) Master interface

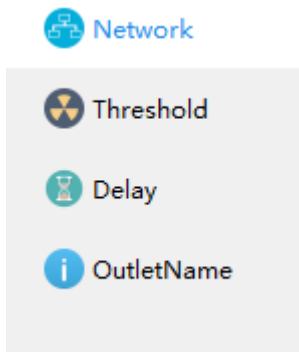
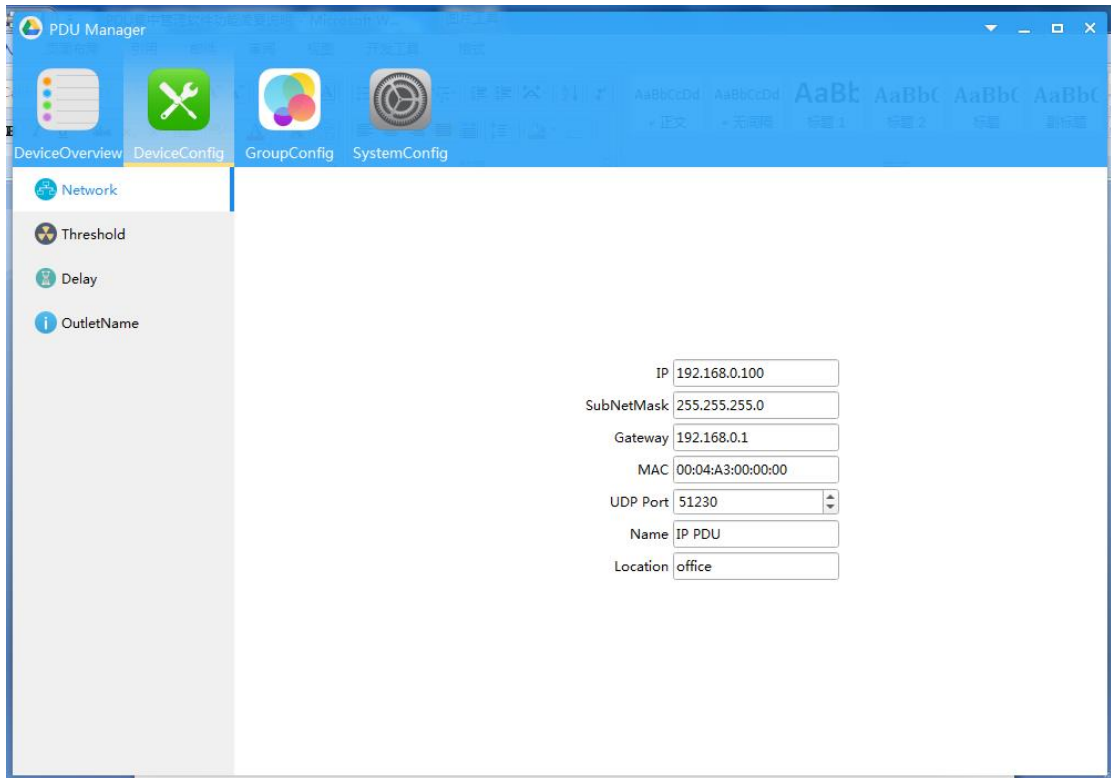


According to the online PDUs, users can view the status of each port on and off, voltage, current, temperature, humidity and other states.



This window allows users to manually turn the power on or off.

### 3) Device Configuration window



Configuration window has four options, namely, network, threshold, delay, jack name setting options.

IP	<input type="text" value="192.168.0.100"/>
SubNetMask	<input type="text" value="255.255.255.0"/>
Gateway	<input type="text" value="192.168.0.1"/>
MAC	<input type="text" value="00:04:A3:00:00:00"/>
UDP Port	<input type="text" value="51230"/>
Name	<input type="text" value="IP PDU"/>
Location	<input type="text" value="office"/>

Network Sett Options

CurrentWarnValue	<input type="text" value="5.0"/>
CurrentOverloadValue	<input type="text" value="6.0"/>
VoltageWarnValue	<input type="text" value="230"/>
VoltageOverloadValue	<input type="text" value="300"/>
TemperatureLowerLimit	<input type="text" value="5"/>
TemperatureUpperLimit	<input type="text" value="60"/>
HumidityWarnValue	<input type="text" value="80"/>

### Threshold Set Options

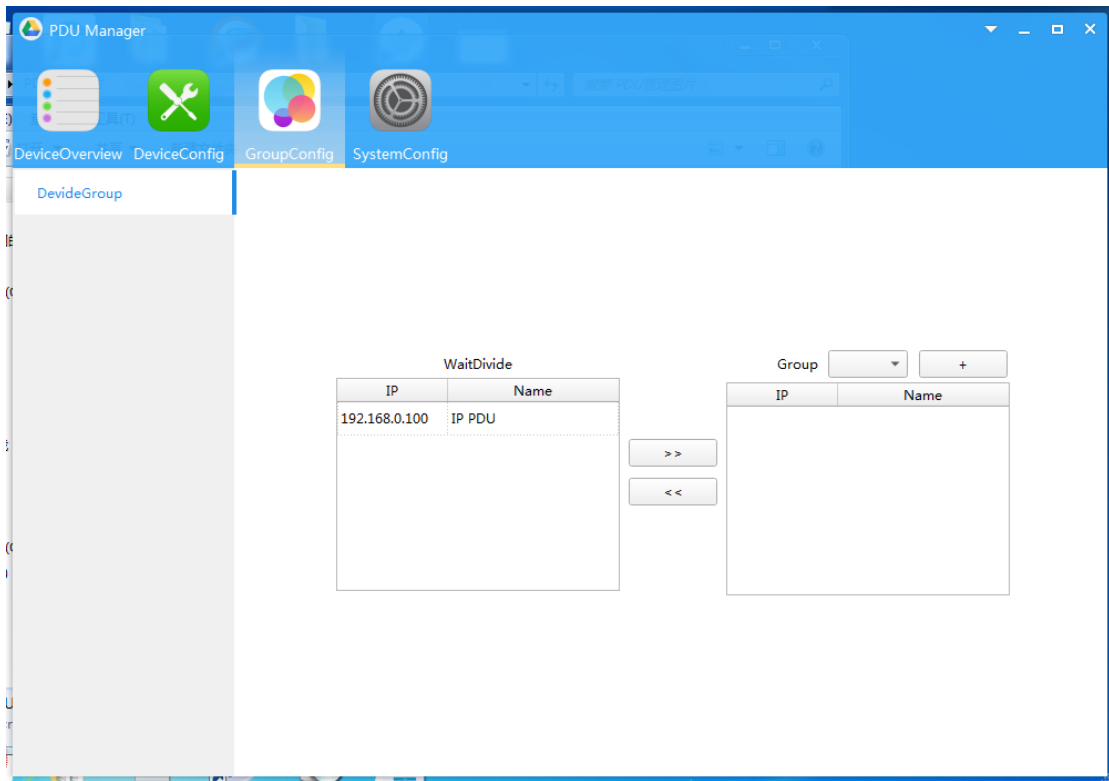
OpenDelay	CloseDelay
Outlet1 <input type="text" value="5"/>	Outlet1 <input type="text" value="5"/>
Outlet2 <input type="text" value="6"/>	Outlet2 <input type="text" value="6"/>
Outlet3 <input type="text" value="7"/>	Outlet3 <input type="text" value="7"/>
Outlet4 <input type="text" value="8"/>	Outlet4 <input type="text" value="8"/>
Outlet5 <input type="text" value="9"/>	Outlet5 <input type="text" value="9"/>
Outlet6 <input type="text" value="10"/>	Outlet6 <input type="text" value="10"/>
Outlet7 <input type="text" value="11"/>	Outlet7 <input type="text" value="11"/>
Outlet8 <input type="text" value="12"/>	Outlet8 <input type="text" value="12"/>

### Delay Set Options

Outlet1	<input type="text" value="A"/>
Outlet2	<input type="text" value="B"/>
Outlet3	<input type="text" value="TEST"/>
Outlet4	<input type="text" value="USER1"/>
Outlet5	<input type="text" value="admin"/>
Outlet6	<input type="text" value="USER2"/>
Outlet7	<input type="text" value="outlet7"/>
Outlet8	<input type="text" value="outlet8"/>

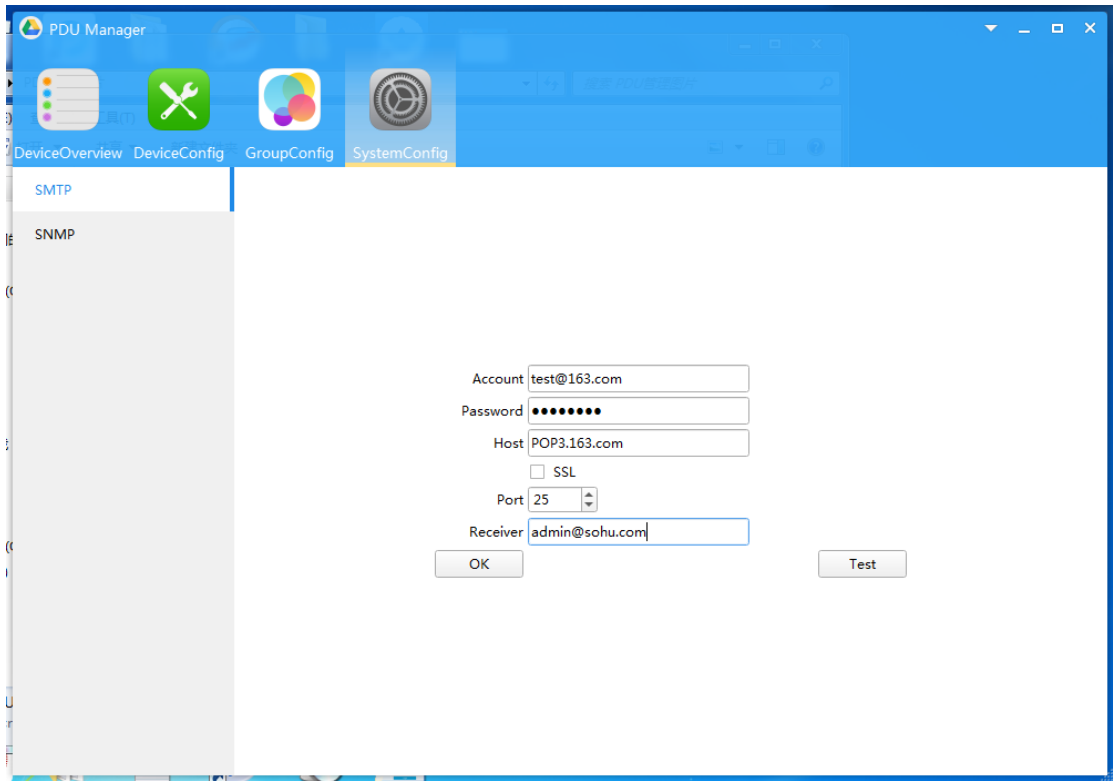
### Jack name setting options

#### 4) Group Settings window



The user can set the group management according to the PDU resources.

#### 5) System Configuration window



The user can set the alarm mail of the administrator mail receiving system.